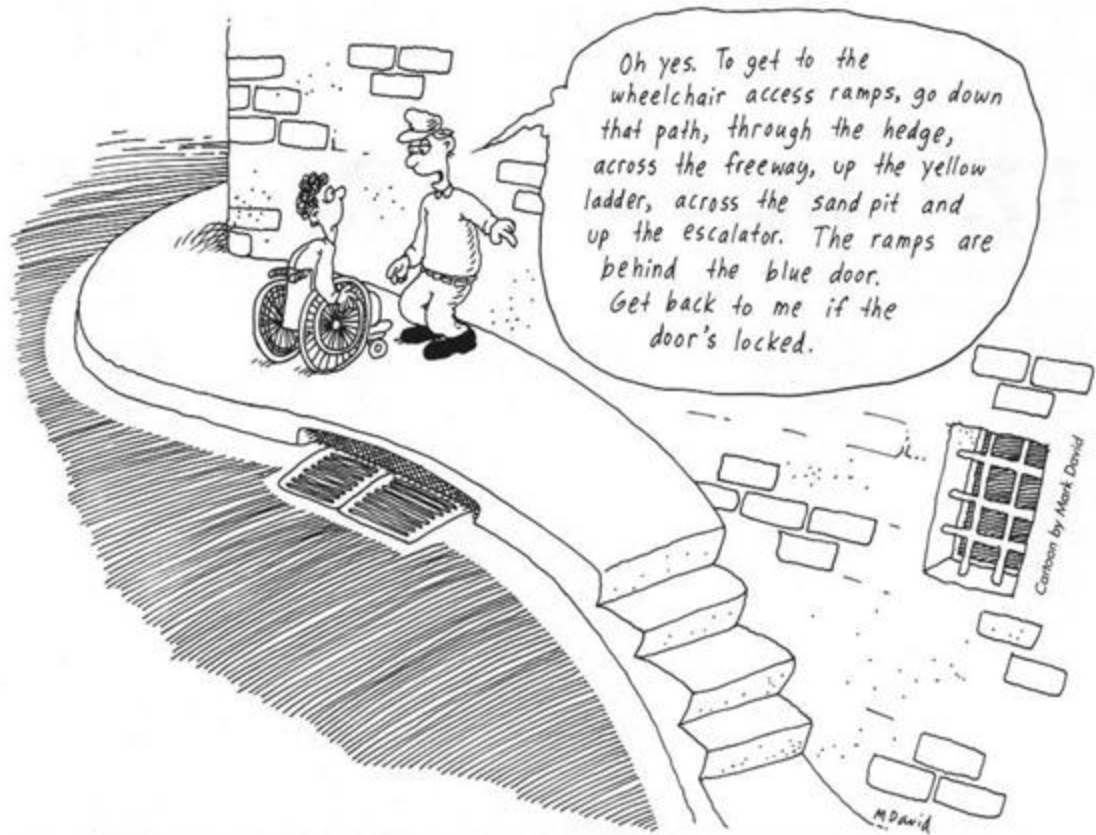


# LIFESTYLES WITH MS

A discussion with Ann Langley





Oh yes. To get to the wheelchair access ramps, go down that path, through the hedge, across the freeway, up the yellow ladder, across the sand pit and up the escalator. The ramps are behind the blue door. Get back to me if the door's locked.

Cartoon by Mark David


M David




Cartoon by Phil Somerville

*They're kidnapping us but they said we'll never have to face another set of stairs ever again*


# HOME IS WHERE THE LEGS ARE

- ▶ Wide doorways and hallways are a help
  - ▶ Bathroom design **MUST** suit your disability
  - ▶ If changes are too expensive, fit handrails beside toilet and shower.
  - ▶ Falls are very expensive, too.
- 

# UNIVERSAL HOUSING DESIGN

- ▶ This is not a new concept, now an idea spreading worldwide.
  - ▶ The lower level of highset houses must be accessible with either no entry stairs or a ramp.
  - ▶ You may need to fit an accessible ensuite into this level.
- 

# THE ALTERNATIVE

- ▶ If you think re-designing the house is too expensive, consider this:
  - ▶ The cost of living in a nursing home for 10 years is AUD 800,000.
  - ▶ This will be plus any cost for time in hospital for skin breakdown repair.
- 

# BATHROOM DOOR




# MY FRIENDS IN NURSING HOMES

- ▶ I had 10 friends in nursing homes. The costs of keeping them there for 10 years were:
- ▶ AUD 800,000 each, which = AUD 8 million.
- ▶ Allow for hospital treatment 30 days per year each, @ AUD 1000 per day = AUD 300,000.
- ▶ So total costs were AUD 8.3 million.
- ▶ Cost of building 10 units @ AUD 210,000 each = AUD 2.1 million.




# OTHER ALTERNATIVES


- ▶ Life at Coorparoo.
  - ▶ Built by McDonald Keen group for the Queensland MS Society to provide 8 2bedroom units for 16 people with ms.
  - ▶ The upper floor units are being sold to offset the cost of building the disability units.
- 

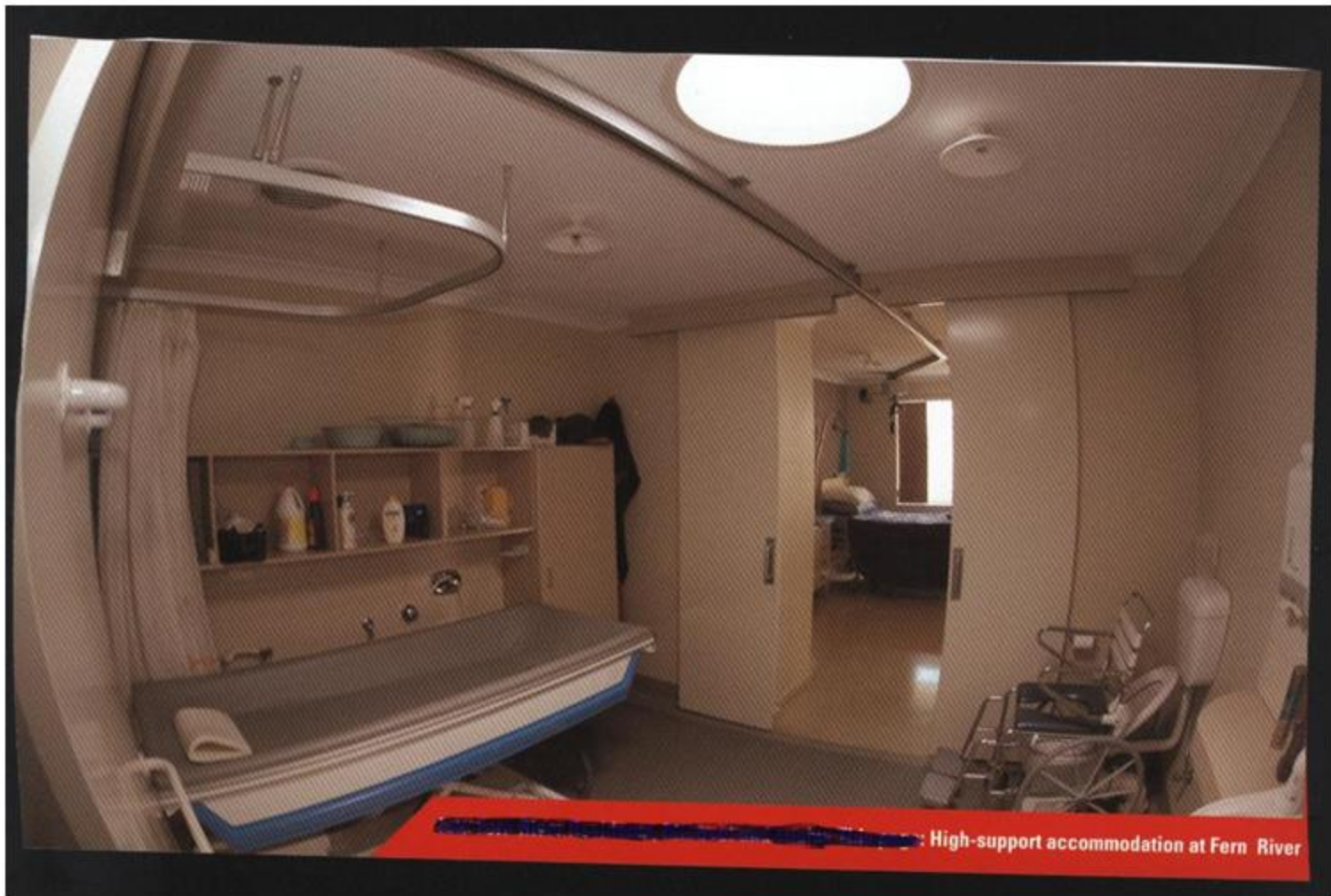


# YOUNGCARE QUEENSLAND

- ▶ Fully staffed residential of 16 1 bed units designed for young people with high care needs, some of them with MS. This will open in December.
  - ▶ Youngcare is building another residential block at Queensland's Gold Coast.
- 


# FERN RIVER WEST AUSTRALIA

- ▶ Fully staffed cluster of six residential units, 5 individual and one shared. Built by the MS Society of Western Australia with Government assistance, to enable young people with MS to move from nursing homes. A couple may stay together, allowing a partner to continue working, knowing that full care is available at home.
  - ▶ The next slide shows the bathroom, and bedroom of one unit.
- 



High-support accommodation at Fern River

# COSTS

- ▶ The balance of cost difference between nursing homes and purpose built units is approximately AUD 6.2 million. This allows for staffing costs of AUD 620,000 per year.
  - ▶ As shown, both Fern River and Youngcare have extensive electronic controls, increasing their costs.
  - ▶ The best aspects of both is that a couple may live together, with care provided.
- 









Cartoon by Mark David

POST OFFICE

How am I supposed to get in?

I think you're supposed to mail yourself.

M. David